

600T/H Automatic Chemistry Analyzer BK-600



Features:

- ①. 600 Tests per hour.
- ②. 120 Reaction cuvettes.
- ③. 180 Refrigerated reagent positions.
- ⑤. Built-in sample barcode system optional.
- ⑥. 90 Sample positions.(120 sample positions optional).
- ⑦. Probe with anti-collision function, liquid level detection function.



Reaction Tray
37±0.1°C, real-time monitor.



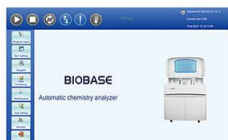
Mixer Probe
Teflon coating to avoid cross contamination.



Reagent Tray
2~8°C cooling for 24 hours.



Sample Probe
Liquid level sensor function. Anti-collision function. Sample volume real-time detection.



Software
User-friendly software.



Washing Probe
Independent 7-step washing system.

Parameters:

Model	BK-600	
Overall Performance	Throughput	600 Tests/hour
	Analysis Method	End-point, Fixed-time, Rate(Kinetic), Turbidimetry
	Certificates	CE, FDA, ISO9001, ISO13485
Sample & Reagent System	Sample Positions	90 sample positions, built-in barcode system available
	Reagent Positions	180 refrigerated reagent positions (R1: 90 & R2: 90)
	Sample Volume	1~70µl
	Reagent Volume	10~350µl
	Probe	Teflon coating, with anti-collision function, liquid level detection function
	Probe Washing	Automatic washing interior and exterior
Reaction System	Reagent Cooling	2~8°C
	Temperature Control	37±0.1°C, real-time monitoring
	Cuvettes	120 reusable cuvettes, optical length 6mm
	Mixer Probe	Independent stirring
	Washing	Automatic cuvettes washing
	STAT Function	YES
Optical System	Light Source	12V/20W halogen lamp
	Spectrophotometry	Post-spectral spectrophotometry
	Wavelength	340, 405, 450, 480, 505, 546, 570, 600, 630, 700, 750, 800nm
Calibration & QC	Absorbance	0~3.5Abs
	Calibration	1-point, 2-point and multi-point, factor, Spline,
	Quality Control	Logit-4P, Logit-5P, Polygon
Data Management	Quality Control	Inserting quality control at random
	Software	Windows 7/8/10
	LIS System	Available
Working Conditions	Interface	TCP/IP Network interface
	Printer	External optional, multiple reporting mode available
	Power Supply	220V±10% 50/60Hz, 110V±10% 60Hz, 800VA
	Temperature	15~30°C
Size & Weight	Water Consumption	Deionized water: 20L/h
	Humidity	40%~85%
	External Size (W*D*H)	1170*775*1145mm
	Net Weight	216kg
Size & Weight	Package Size (W*D*H)	1358*938*1387mm
	Gross Weight	281kg
	Accessory Package Size	550*430*860mm
	Accessory Gross Weight	20kg